

♥ Like	
↻ Reblog	
+ Follow	
🏠 Stream	

Shanghai Style

HOME

FEBRUARY 07, 2014

Designer Interview: EK

Born and raised in Pennsylvania, designer Emily Keller has spent a good amount of time cultivating her aesthetic sensibilities in New York and Milan before arriving in Shanghai three years ago. Having recently launched a reversible knitwear collection EK under her eponymous label, Shanghai Style caught up with the budding designer to learn more about what her designs are all about. Keep reading below to learn more...



When did you know you wanted to study design?

Emily: I've been interested in fashion and sewing since I was 9 years old. That's when I started crocheting and modifying my own clothes. I took my first fashion course while in high school, where I learned a lot of the basics and decided I could actually pursue it as a career. I attended the Fashion Institute of Technology (FIT) in New York City where I earned my AAS degree in Fashion Design, and my BFA degree in Knitwear. I also attended the Politecnico di Milano for one year of study abroad in Milan, Italy.

Is this your first collection?

Emily: I have been designing clothes since an early age, but this is my first official collection under our brand, Emily Keller.

When did EK launch?

Emily: EK launched on January 1st.

How has your style evolved since graduating?

Emily: My design style has changed a lot since graduation, but the core ideals have remained the same. I have always focused on designing innovative solutions to real problems to guide my design. The more challenging the problem, the more meaningful the design solution becomes.

Search

Follow Me On..

[Weibo](#)

[Tumblr](#)

Instagram: sandychuchu13

About Me



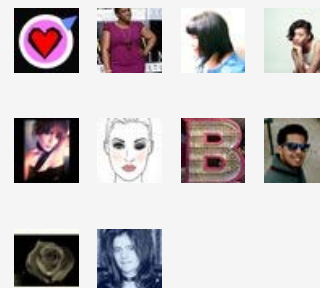
[chusandy](#)

- [Private Message Me](#)
- Member for 4 years 7 weeks
- Last online 20 hours 11 seconds ago

Subscribe



81 followers



[See all followers](#)

[Start following this site](#)

Latest Headlines

- [Final Taipei Inspirations](#)
- [Do You Know Any Asians That Don't Love Cats?](#)
- [Getting Crafty](#)
- [Kickstart Mary Ching's A/W 14 Imperial](#)



Your knitwear is fully reversible. How did you come up with the concept? Are there any movements or trends in fashion that influenced you?

Emily: Our design inspiration comes from problem solving. To introduce our brand, Emily Keller, to the market, we wanted to come up with a concept that reflected our core values and interests. It was important for the concept to be simple and easily understandable, yet to carry a clear message of innovation, uniqueness and sustainability. As a knitwear designer, on more than one occasion I found myself dealing with the dilemma of which side of the fabric I would use. Reversibility in knitwear became my solution for this problem while challenging me to development knit stitches that are contrasting and attractive on both sides. Making the garment wearable on both sides means that the times the garment is worn is increased which meant for us that the quality and durability of the garment had to be increased as well. Because of this concept the end user is able to buy less clothing at a higher quality, while keeping optimum options in their closet. You can say that in this case “less is” really “more” and that “the whole is greater than the sum of its parts”.

How important do you think smart design will become in the future?

Emily: I think smart design is extremely important now, and will be even more so in the future. To be able to talk about “smart design”, we first have to define the term. In our case smart design covers many different aspects, from making a material selection to finding a practical construction technique. As people start to care more about the environment and ethical practices, smart design will also take these things into consideration. As smart designers, we have to make smart decisions in light of these social issues. Using organic materials, sourcing locally to reduce our carbon footprint, and understanding the conditions in which our workers operate are basic requirements for a smart, relevant, and responsible design. Like all design driven industries, aesthetic in fashion will remain a top priority. For us, one of the most important characteristics of a good design is the element of timelessness. This has the potential to reduce consumer’s consumption and ties back into saving resources and ultimately contributing to the well being of our environment. We believe that “smart design” is the key to a better future because here lies the solution to our most difficult problems.

Stardust Collection

- [Shanghai Becomes the Top Fashion Capital in Asia](#)
- [Taipei Portrait Inspirations](#)

Latest Comments

- [This is should a great concept! I am very excited by Garcm725 on Designer Interview: EK](#)
- [she dresses so well love that pop of blue](#) by Nathalie90 on [Blast from the Past](#)
- [Hey if you can email me sandychu.chu at gmail I by chusandy on And on to September](#)



Blogroll

- [minimal-ism](#)
- [Expat Cucina](#)
- [1 Dollar Cocktail](#)
- [Cinch by the Inch](#)
- [Chinese People Have No Style](#)
- [Shanghai Style File](#)
- [Vain Lane](#)
- [Shanghai Collected](#)
- [Swedish Love Affair](#)
- [The Road Is Home](#)

**independent
fashion
bloggers** 



You are now based in Shanghai, how or why did you pick this city?

Emily: We chose Shanghai because it's an optimistic place with a lot of growth. There is a lot happening here, and it's great to be a part of it.

What is a signature design element in your brand?

Emily: Our design element that will always remain is innovation. We prefer not to get attached to anything in particular since our designs will always evolve to remain relevant.

Who is the EK girl?

Emily: The EK girl strives for a balance of brains and looks. She is both, intelligent and stylish.

**What was the inspiration for the current collection?**

Emily: Our visual inspiration for the patterns found in this collection came from reptile skin. We wanted something bold, but sexy and feminine. We also found inspiration on classic silhouettes, which complimented and highlighted the stitch detail.

When will the next collection launch?

Emily: We are focusing on a full collection for fall 2014 that will have 15-20 pieces, which for us means 30-40 looks since each piece is reversible.

Where can we buy EK?

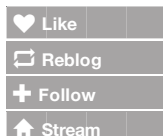
You can currently buy EK|Reversible at AK Collection at 1285 HuaiHai Middle Road near ChangShu Road, Suite #31 back door. (Across from #36) Chinese address: 上海市淮海中路近常熟路, 1285弄, 31号的后门 (在36号对面) Call Sherry for hours: +86 139 1715 4414

We are also working on a [Taobao store](#) where you can purchase the collection online. Pieces will be available online starting in March, prices range from about 600-1000 RMB.

by: [chusandy](#)

[0 Comments](#) -

Tags: [smart designs](#), [Ek](#), [Reversible](#), [Shanghai](#), [Knitwear](#), [indie](#), [designer](#), [style](#), [Fashion](#)



Shanghai Style

HOME

FEBRUARY 07, 2014

Designer Interview: EK

Born and raised in Pennsylvania, designer Emily Keller has spent a good amount of time cultivating her aesthetic sensibilities in New York and Milan before arriving in Shanghai three years ago. Having recently launched a reversible knitwear collection EK under her eponymous label, Shanghai Style caught up with the budding designer to learn more about what her designs are all about. Keep reading below to learn more...



When did you know you wanted to study design?

Emily: I've been interested in fashion and sewing since I was 9 years old. That's when I started crocheting and modifying my own clothes. I took my first fashion course while in high school, where I learned a lot of the basics and decided I could actually pursue it as a career. I attended the Fashion Institute of Technology (FIT) in New York City where I earned my AAS degree in Fashion Design, and my BFA degree in Knitwear. I also attended the Politecnico di Milano for one year of study abroad in Milan, Italy.

Is this your first collection?

Emily: I have been designing clothes since an early age, but this is my first official collection under our brand, Emily Keller.

When did EK launch?

Emily: EK launched on January 1st.

How has your style evolved since graduating?

Emily: My design style has changed a lot since graduation, but the core ideals have remained the same. I have always focused on designing innovative solutions to real problems to guide my design. The more challenging the problem, the more meaningful the design solution becomes.

Search

Follow Me On..

[Weibo](#)

[Tumblr](#)

Instagram: sandychuchu13

About Me



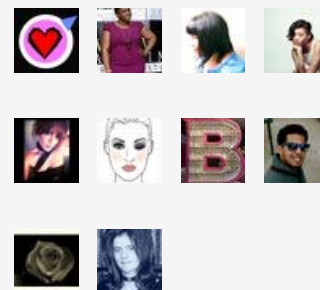
[chusandy](#)

- [Private Message Me](#)
- Member for 4 years 7 weeks
- Last online 20 hours 11 seconds ago

Subscribe



81 followers



[See all followers](#)

[Start following this site](#)

Latest Headlines

- [Final Taipei Inspirations](#)
- [Do You Know Any Asians That Don't Love Cats?](#)
- [Getting Crafty](#)
- [Kickstart Mary Ching's A/W 14 Imperial](#)



Your knitwear is fully reversible. How did you come up with the concept? Are there any movements or trends in fashion that influenced you?

Emily: Our design inspiration comes from problem solving. To introduce our brand, Emily Keller, to the market, we wanted to come up with a concept that reflected our core values and interests. It was important for the concept to be simple and easily understandable, yet to carry a clear message of innovation, uniqueness and sustainability. As a knitwear designer, on more than one occasion I found myself dealing with the dilemma of which side of the fabric I would use. Reversibility in knitwear became my solution for this problem while challenging me to development knit stitches that are contrasting and attractive on both sides. Making the garment wearable on both sides means that the times the garment is worn is increased which meant for us that the quality and durability of the garment had to be increased as well. Because of this concept the end user is able to buy less clothing at a higher quality, while keeping optimum options in their closet. You can say that in this case “less is” really “more” and that “the whole is greater than the sum of its parts”.

How important do you think smart design will become in the future?

Emily: I think smart design is extremely important now, and will be even more so in the future. To be able to talk about “smart design”, we first have to define the term. In our case smart design covers many different aspects, from making a material selection to finding a practical construction technique. As people start to care more about the environment and ethical practices, smart design will also take these things into consideration. As smart designers, we have to make smart decisions in light of these social issues. Using organic materials, sourcing locally to reduce our carbon footprint, and understanding the conditions in which our workers operate are basic requirements for a smart, relevant, and responsible design. Like all design driven industries, aesthetic in fashion will remain a top priority. For us, one of the most important characteristics of a good design is the element of timelessness. This has the potential to reduce consumer’s consumption and ties back into saving resources and ultimately contributing to the well being of our environment. We believe that “smart design” is the key to a better future because here lies the solution to our most difficult problems.

Stardust Collection

- [Shanghai Becomes the Top Fashion Capital in Asia](#)
- [Taipei Portrait Inspirations](#)

Latest Comments

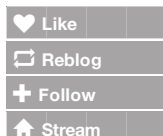
- [This is should a great concept! I am very excited by Garcm725 on Designer Interview: EK](#)
- [she dresses so well love that pop of blue](#) by Nathalie90 on [Blast from the Past](#)
- [Hey if you can email me sandychu.chu at gmail I by chusandy on And on to September](#)



Blogroll

- [minimal-ism](#)
- [Expat Cucina](#)
- [1 Dollar Cocktail](#)
- [Cinch by the Inch](#)
- [Chinese People Have No Style](#)
- [Shanghai Style File](#)
- [Vain Lane](#)
- [Shanghai Collected](#)
- [Swedish Love Affair](#)
- [The Road Is Home](#)

**independent
fashion
bloggers** 



Shanghai Style

HOME

FEBRUARY 07, 2014

Designer Interview: EK

Born and raised in Pennsylvania, designer Emily Keller has spent a good amount of time cultivating her aesthetic sensibilities in New York and Milan before arriving in Shanghai three years ago. Having recently launched a reversible knitwear collection EK under her eponymous label, Shanghai Style caught up with the budding designer to learn more about what her designs are all about. Keep reading below to learn more...



When did you know you wanted to study design?

Emily: I've been interested in fashion and sewing since I was 9 years old. That's when I started crocheting and modifying my own clothes. I took my first fashion course while in high school, where I learned a lot of the basics and decided I could actually pursue it as a career. I attended the Fashion Institute of Technology (FIT) in New York City where I earned my AAS degree in Fashion Design, and my BFA degree in Knitwear. I also attended the Politecnico di Milano for one year of study abroad in Milan, Italy.

Is this your first collection?

Emily: I have been designing clothes since an early age, but this is my first official collection under our brand, Emily Keller.

When did EK launch?

Emily: EK launched on January 1st.

How has your style evolved since graduating?

Emily: My design style has changed a lot since graduation, but the core ideals have remained the same. I have always focused on designing innovative solutions to real problems to guide my design. The more challenging the problem, the more meaningful the design solution becomes.

Search

Follow Me On..

[Weibo](#)

[Tumblr](#)

Instagram: sandychuchu13

About Me



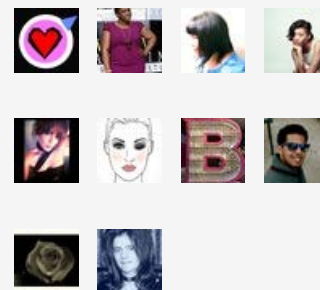
[chusandy](#)

- [Private Message Me](#)
- Member for 4 years 7 weeks
- Last online 20 hours 11 seconds ago

Subscribe



81 followers



[See all followers](#)

[Start following this site](#)

Latest Headlines

- [Final Taipei Inspirations](#)
- [Do You Know Any Asians That Don't Love Cats?](#)
- [Getting Crafty](#)
- [Kickstart Mary Ching's A/W 14 Imperial](#)



Your knitwear is fully reversible. How did you come up with the concept? Are there any movements or trends in fashion that influenced you?

Emily: Our design inspiration comes from problem solving. To introduce our brand, Emily Keller, to the market, we wanted to come up with a concept that reflected our core values and interests. It was important for the concept to be simple and easily understandable, yet to carry a clear message of innovation, uniqueness and sustainability. As a knitwear designer, on more than one occasion I found myself dealing with the dilemma of which side of the fabric I would use. Reversibility in knitwear became my solution for this problem while challenging me to development knit stitches that are contrasting and attractive on both sides. Making the garment wearable on both sides means that the times the garment is worn is increased which meant for us that the quality and durability of the garment had to be increased as well. Because of this concept the end user is able to buy less clothing at a higher quality, while keeping optimum options in their closet. You can say that in this case “less is” really “more” and that “the whole is greater than the sum of its parts”.

How important do you think smart design will become in the future?

Emily: I think smart design is extremely important now, and will be even more so in the future. To be able to talk about “smart design”, we first have to define the term. In our case smart design covers many different aspects, from making a material selection to finding a practical construction technique. As people start to care more about the environment and ethical practices, smart design will also take these things into consideration. As smart designers, we have to make smart decisions in light of these social issues. Using organic materials, sourcing locally to reduce our carbon footprint, and understanding the conditions in which our workers operate are basic requirements for a smart, relevant, and responsible design. Like all design driven industries, aesthetic in fashion will remain a top priority. For us, one of the most important characteristics of a good design is the element of timelessness. This has the potential to reduce consumer's consumption and ties back into saving resources and ultimately contributing to the well being of our environment. We believe that “smart design” is the key to a better future because here lies the solution to our most difficult problems.

Stardust Collection

- [Shanghai Becomes the Top Fashion Capital in Asia](#)
- [Taipei Portrait Inspirations](#)

Latest Comments

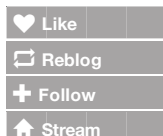
- [This is should a great concept! I am very excited by Garcm725 on Designer Interview: EK](#)
- [she dresses so well love that pop of blue](#) by Nathalie90 on [Blast from the Past](#)
- [Hey if you can email me sandychu.chu at gmail I by chusandy on And on to September](#)



Blogroll

- [minimal-ism](#)
- [Expat Cucina](#)
- [1 Dollar Cocktail](#)
- [Cinch by the Inch](#)
- [Chinese People Have No Style](#)
- [Shanghai Style File](#)
- [Vain Lane](#)
- [Shanghai Collected](#)
- [Swedish Love Affair](#)
- [The Road Is Home](#)

**independent
fashion
bloggers** 



Shanghai Style

HOME

FEBRUARY 07, 2014

Designer Interview: EK

Born and raised in Pennsylvania, designer Emily Keller has spent a good amount of time cultivating her aesthetic sensibilities in New York and Milan before arriving in Shanghai three years ago. Having recently launched a reversible knitwear collection EK under her eponymous label, Shanghai Style caught up with the budding designer to learn more about what her designs are all about. Keep reading below to learn more...



When did you know you wanted to study design?

Emily: I've been interested in fashion and sewing since I was 9 years old. That's when I started crocheting and modifying my own clothes. I took my first fashion course while in high school, where I learned a lot of the basics and decided I could actually pursue it as a career. I attended the Fashion Institute of Technology (FIT) in New York City where I earned my AAS degree in Fashion Design, and my BFA degree in Knitwear. I also attended the Politecnico di Milano for one year of study abroad in Milan, Italy.

Is this your first collection?

Emily: I have been designing clothes since an early age, but this is my first official collection under our brand, Emily Keller.

When did EK launch?

Emily: EK launched on January 1st.

How has your style evolved since graduating?

Emily: My design style has changed a lot since graduation, but the core ideals have remained the same. I have always focused on designing innovative solutions to real problems to guide my design. The more challenging the problem, the more meaningful the design solution becomes.

Search

Follow Me On..

[Weibo](#)

[Tumblr](#)

Instagram: sandychuchu13

About Me



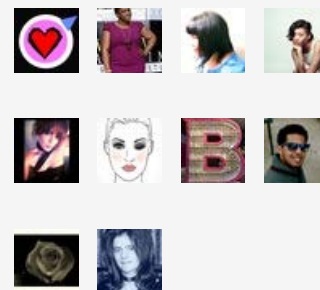
[chusandy](#)

- [Private Message Me](#)
- Member for 4 years 7 weeks
- Last online 20 hours 11 seconds ago

Subscribe



81 followers



[See all followers](#)

[Start following this site](#)

Latest Headlines

- [Final Taipei Inspirations](#)
- [Do You Know Any Asians That Don't Love Cats?](#)
- [Getting Crafty](#)
- [Kickstart Mary Ching's A/W 14 Imperial](#)



Your knitwear is fully reversible. How did you come up with the concept? Are there any movements or trends in fashion that influenced you?

Emily: Our design inspiration comes from problem solving. To introduce our brand, Emily Keller, to the market, we wanted to come up with a concept that reflected our core values and interests. It was important for the concept to be simple and easily understandable, yet to carry a clear message of innovation, uniqueness and sustainability. As a knitwear designer, on more than one occasion I found myself dealing with the dilemma of which side of the fabric I would use. Reversibility in knitwear became my solution for this problem while challenging me to development knit stitches that are contrasting and attractive on both sides. Making the garment wearable on both sides means that the times the garment is worn is increased which meant for us that the quality and durability of the garment had to be increased as well. Because of this concept the end user is able to buy less clothing at a higher quality, while keeping optimum options in their closet. You can say that in this case “less is” really “more” and that “the whole is greater than the sum of its parts”.

How important do you think smart design will become in the future?

Emily: I think smart design is extremely important now, and will be even more so in the future. To be able to talk about “smart design”, we first have to define the term. In our case smart design covers many different aspects, from making a material selection to finding a practical construction technique. As people start to care more about the environment and ethical practices, smart design will also take these things into consideration. As smart designers, we have to make smart decisions in light of these social issues. Using organic materials, sourcing locally to reduce our carbon footprint, and understanding the conditions in which our workers operate are basic requirements for a smart, relevant, and responsible design. Like all design driven industries, aesthetic in fashion will remain a top priority. For us, one of the most important characteristics of a good design is the element of timelessness. This has the potential to reduce consumer’s consumption and ties back into saving resources and ultimately contributing to the well being of our environment. We believe that “smart design” is the key to a better future because here lies the solution to our most difficult problems.

Stardust Collection

- [Shanghai Becomes the Top Fashion Capital in Asia](#)
- [Taipei Portrait Inspirations](#)

Latest Comments

- [This is should a great concept! I am very excited by Garcm725 on Designer Interview: EK](#)
- [she dresses so well love that pop of blue](#) by Nathalie90 on [Blast from the Past](#)
- [Hey if you can email me sandychu.chu at gmail I by chusandy on And on to September](#)



Blogroll

- [minimal-ism](#)
- [Expat Cucina](#)
- [1 Dollar Cocktail](#)
- [Cinch by the Inch](#)
- [Chinese People Have No Style](#)
- [Shanghai Style File](#)
- [Vain Lane](#)
- [Shanghai Collected](#)
- [Swedish Love Affair](#)
- [The Road Is Home](#)

**independent
fashion
bloggers** 